

EN

Dual USB PlayStand  
for Nintendo Switch™ 2

# Instruction Manual

Thank you for purchasing this product.

Before use, please read the instruction manual carefully.

After reading, please keep the manual for reference.



Please check that your Nintendo Switch™ is up to date before using this product.



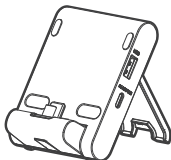
# Caution

Parents / Guardians:

Please read the following information carefully.

- This product contains small parts. Keep away from children under 3 years old.
- Keep this product away from small children or infants. Seek medical attention immediately if any small parts are swallowed.
- This product is for indoor use only.
- Please use this product where the room temperature is 0-40°C (32-104°F).
- Do not use the product if there is foreign material or dust on the terminals of the product. This may cause electric shock, malfunction, or poor contact. Remove any foreign material or dust with a dry cloth.
- Keep the product away from dusty or humid areas.
- Do not use this product if it has been damaged or modified.
- Do not touch this product with wet hands. This may cause an electric shock.
- Do not get this product wet. This may cause an electric shock or malfunction.
- Do not place this product near heat sources or leave under direct sunlight for an extended period. Overheating may cause malfunction.
- Do not use this product with a USB hub or extension cable. The product may not function properly.
- Do not touch the metal parts of the USB plug.
- Do not apply strong impact or weight on the product.
- Do not disassemble, modify or attempt to repair this product.
- If product needs cleaning, use only a soft dry cloth. Do not use any chemical agents like benzene or thinner.
- The packaging must be retained since it contains important information.
- Please retain this instruction manual for your future reference.
- We are not responsible for any accidents or damages in the event of use other than the intended purpose.

## Contents



Stand × 1



Instruction Manual × 1

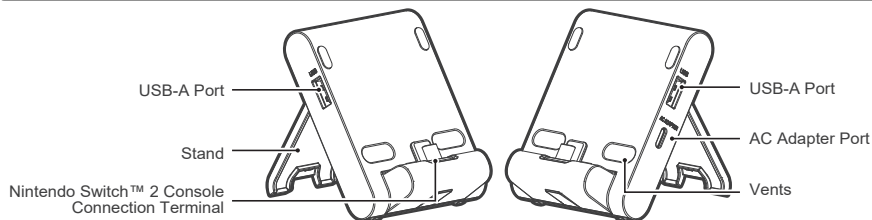
## Compatibility

### Nintendo Switch™ 2

#### Important

Before using this product, please read the instruction manuals for the software and console hardware to be involved in its use. Please check that your console is updated to the latest system software. An internet connection is required to update the Nintendo Switch™ 2 console to the latest system software.

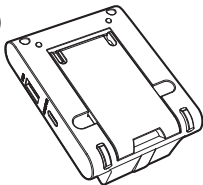
## Layout and Features



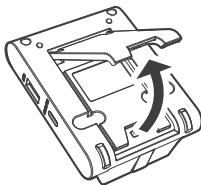
Do not block the vents of this product or the Nintendo Switch™ console. This product cannot be used in TV Mode.

## How to Set Up

①



②



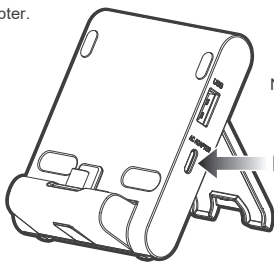
③



## How to Connect

1

Connect the AC adapter.



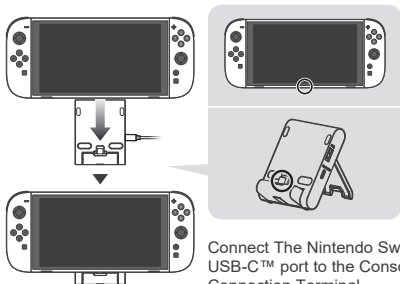
Nintendo Switch™ 2 AC Adapter  
(AC adapter included with Nintendo Switch™ 2 console)



Only use the Nintendo Switch™ 2 AC Adapter.  
Do not use other AC adapters.

2

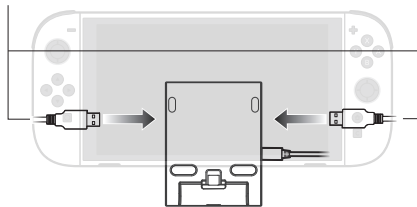
Connect the Nintendo Switch™ 2 console.



3

Connect the peripheral's USB plug.

USB-A Connector



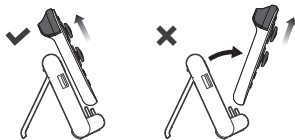
USB ports will not function if the Nintendo Switch™ 2 console is not connected.

## How to Remove

Hold the Nintendo Switch™ 2 console and pull to remove. Please hold the Nintendo Switch™ 2 console firmly so it does not fall.



Do not disconnect the Nintendo Switch™ 2 by pulling it forward. Always disconnect by pulling upward to avoid damage.



## Troubleshooting

If this product does not function as desired, please check the following:

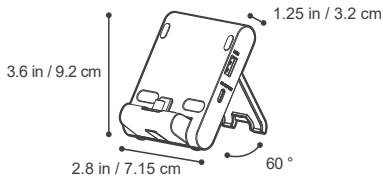
### 1. Nintendo Switch™ 2 console will not charge.

- Make sure the AC adapter is connected to this product. If it is not connected, connect the AC adapter to this product.
- Disconnect the Nintendo Switch™ 2 console, all USB devices, and AC adapter for at least 20 seconds. Connect again following steps in "How to Connect". cted, connect the AC adapter to this product.

### 2. Nintendo Switch™ 2 does not recognize the peripheral device connected to the USB port.

- Make sure the AC adapter is connected to this product. If it is not connected, connect the AC adapter to this product.
- If the peripheral is not recognized, remove the Joy-Con™ 2 from the Nintendo Switch™ 2. If the peripheral is still not recognized after removing the Joy-Con™ 2, press the SYNC Button on the side of the Joy-Con™ 2.

## Specifications



0.17 lbs / 80 g

Rating: 15 V  $\approx$  2.6 A

#### CAUTION:

Any changes or modifications not expressly approved by the party responsible for compliance could void the user's authority to operate the equipment.

#### THE FCC WANTS YOU TO KNOW

This device complies with part 15 of the FCC Rules. Operation is subject to the following two conditions:

(1) This device may not cause harmful interference, and (2) this device must accept any interference received, including interference that may cause undesired operation.

#### NOTE:

This equipment has been tested and found to comply with the limits for a Class B digital device, pursuant to part 15 of the FCC Rules. These limits are designed to provide reasonable protection against harmful interference in a residential installation. This equipment generates, uses and can radiate radio frequency energy and, if not installed and used in accordance with the instructions, may cause harmful interference to radio communications. However, there is no guarantee that interference will not occur in a particular installation. If this equipment does cause harmful interference to radio or television reception, which can be determined by turning the equipment off and on, the user is encouraged to try to correct the interference by one or more of the following measures:

- Reorient or relocate the receiving antenna.
- Increase the separation between the equipment and receiver.
- Connect the equipment into an outlet on a circuit different from that to which the receiver is connected.
- Consult the dealer or an experienced radio/TV technician for help.

CAN ICES-003(B) / NMB-003(B)

This Class B digital apparatus complies with Canadian ICES-003.

Cet appareil numérique de la classe B est conforme à la norme NMB-003 du Canada.

#### Simplified Declaration of Conformity

Hereby, HORI declares that this product is in compliance with Directive 2014/53/EU.

The full text of the EU declaration of conformity is available at the following internet address:

<https://hori.co.uk/consumer-information/>



#### For UK:

Hereby, HORI declares that this product is in compliance with the relevant statutory requirements.

The full text of the declaration of conformity is available at the following internet address:

<https://hori.co.uk/consumer-information/>



#### PRODUCT DISPOSAL INFORMATION

Where you see this symbol on any of our electrical products or packaging, it indicates that the relevant electrical product or battery should not be disposed of as general household waste in Europe. To ensure the correct waste treatment of the product and battery, please dispose of them in accordance with any applicable local laws or requirements for disposal of electrical equipment or batteries. In so doing, you will help to conserve natural resources and improve standards of environmental protection in treatment and disposal of electrical waste.



HORI warrants to the original purchaser that our product purchased new in its original packaging shall be free of any defects in both material and workmanship for a period of one year from the original date of purchase. If the warranty claim cannot be processed through the original retailer, please contact HORI customer support.

For customer support in North America and Latin America, please use our customer support form:

<https://stores.horiusa.com/support/>



For customer support in Europe, please email [info@horiuk.com](mailto:info@horiuk.com)

#### Warranty Information:

For North America, LATAM, Australia : <https://stores.horiusa.com/policies/>



For Europe & Middle East : <https://hori.co.uk/policies/>



Actual product may differ from image.

The manufacturer reserves the right to change the product design or specifications without notice.

USB-C is a registered trademark of USB Implementers Forum.

HORI and HORI logo are registered trademarks of HORI.

All other trademarks are the property of their respective owners.

© Nintendo. Nintendo Switch is a trademark of Nintendo.